

Streaming Media Screen Development Guide

Ver 2.3

1. Introduction

Streaming Media Screen is the Multimedia series products based on Dwin Self-developed ASIC with DGUS II system. The product provides SD card interface for storing video and audio files. The USB interface can also be connected to USB camera to realize the camera function.

Main feature including below :

Complete with DGUS II System all feature

Through simple Settings, video, camera support display at any active area.

Support SD card to display audio and video files;

Can be directly connected to the speaker, realize voice display;

2. System Variable Interface



| VP | Definition | length | Type of command | Description |
|------|----------------|--------|-----------------|--|
| 0500 | Data_Transfer | 12 | Control | Display Area Setting D23:D22=display page D21:D14=(Xs, Ys) + (Xe, Ye) D13:D12=0x5AA5 D11:D10: if setting= 0101It means that the video will play automatically when you switch to the page, otherwise it will not play automatically If setting= 0x2020 Means Play files in a specific directory D9:D0=Reserved |
| 050C | Camera_Control | 1 | Control | Camera_ Co ntrol D1=Camera channel number D0=1 Turn on the camera ;D0=2 turn off the camera |
| 050D | Video_Init | 1 | Control | Video_Init D1= 1 SD card Play; D1=2, USB flash drive; D1=3, Internal FLASH play D0= 0 Play the video; |

| | | | | |
|------|-------------------|----|---------|---|
| | | | | D0= 1: play music; D0=FF Turn off the player |
| 050E | File_Open | 1 | Control | File_Open D1: D0 The number of turn on music and video; 1-50 |
| 0510 | Video_Control | 1 | Control | Video_Control D1=0x5A D0: control command type 0x00: normal play 0x01: pause playing 0x02: stop playing 0x03: fast forward 0x04: fast backward 0x05: Resume play 0x06: Previous file 0x07: Next file 0x09: Rotate from the current file 0x0A: Stop file rotation and play only the current file 0x0D:Current single video rotation, 0x0A: trigger, Then Play the current video only once |
| 0511 | Voice_Control | 1 | Control | Voice_Control D1: 0x5A D0: control command type 0-0x64:The sound volume (0-100) 0xFF: Sound increase 1 0xFE: Voice down 1 |
| 0512 | Lightness_Control | 11 | Control | Lightness_Control D1:0x5A D0: control command type 0-0x64: Backlight brightness value (0-100) 0xFF: Brightness increased 1 0xFE: Brightness to reduce 1 |
| 0513 | Read_Sts | 1 | Read | Read_Sts D1: 0x5A start D0: 0x0F Read_Sts |
| 0514 | Read_File info | 1 | Read | Read_File info D1: The first file number that needs to be read (0x00-0xfe) D0: Total number of files to read (0-32,maximum 32 files) |

| | | | | |
|------|---|---|---------------|--|
| | | | | Attention: D1-D0 =0xFFFF Means read all Number of files. |
| 0520 | Video_Status | 2 | DISPLAY | Displays the state saved location D3=0x00 Video; D3=0x01 audio D2-D1: The file number currently being played D0: playing state, 0x01: Normal, 0x02: Pause; 0x03: Stop; |
| 0521 | Reserved | | | |
| 0522 | Total_Fil enum | 1 | DISPLAY | D1:D0The number of all video or audio files (in conjunction with the address 0514 operation command) |
| 0523 | Capture | 1 | Control | D1:D0 0x5A01 (operate first E110、E130、0528, then 0523) |
| 0524 | Play Picture 1 | 1 | Control | D1=0x5A D0=0x01: Play Picture 1 |
| 0525 | Play Picture 2 | 1 | Control | D1=0x5A D0=0x01: Play Picture 2 |
| 0526 | Enlarge Image 1 | 1 | Control | D1=0x5A D0=0x01 |
| 0527 | Enlarge Image 2 | 1 | Control | D1=0x5A D0=0x01 |
| 0528 | Enter screenshot number | 1 | Input display | Data variable input shows someone's data screenshot number |
| 0529 | Beauty screen display name of folder (Registered) | 1 | Control | 0x5A01 (Use with E110 address) |
| 052A | The beauty screen shows the data folder | 1 | Control | D1:0x5A D0:0x01- 0x0A (Use with D800-D84F) |
| 052B | The beauty screen shows the corresponding picture 1 | 1 | Control | D1:0x5A D0:0x01- 0x0A (Use together with D860-D8AF) |
| 052C | The beauty screen displays customer information | 1 | Control | 0x5A01 |
| 052D | Beauty screen client gender | 3 | Input display | GBK input the Gender "Male" or "Female" |

| | | | | |
|------|---|----|---------------|---|
| 0530 | Beauty screen customer call | 7 | Input display | ASCII input customer phone number 11 bits |
| 0537 | Beauty screen customer information written in (Registration) | 1 | Control | 0x5A01 |
| 0538 | Beauty screen to delete the specified file (photo) | 1 | Control | 0x5A01 |
| 0539 | Specify the beauty screen to delete the customer data folder | 1 | Control | D1:0x5A D0:0x01-0x0A (Control D800-D84F) |
| 0540 | Specify the beauty screen to delete the customer folder | 1 | Control | D1=0x5A D0=0x01 |
| 0541 | Verify that the specified folder is deleted | 1 | Control | D1=0x5A D0=0x01 |
| 0542 | Data_Transfer | 12 | Control | Data_Transfer D23:D22 reserved D21:D14 = (Xs,Ys) + (Xe, Ye) D13:D12= 0x5AA5 D11:D0 reserved |
| 054E | The beauty screen shows the corresponding picture 2 | 1 | Control | D1=0x5A D0:0x01- 0x0A (use with D860-D8AF) |
| 054F | Customer file management | 1 | Control | 0x5A01 |
| 0550 | Customer profile management delete the corresponding customer information | 1 | Control | The value starts at 0x0001 and increments 1 each time, For example: 0x0001,0x0002,0x0003..... (Refer to the 0x8000 address to start the customer, each increment by 1) |
| 0551 | Zoom out Picture 1 | 1 | Control | 0x5A01 |
| 0552 | Zoom out Picture | 1 | Control | 0x5A01 |

| | | | | |
|------|--|---|---------|---|
| | 2 | | | |
| 0553 | Intelligent screenshot with one key (automatic generation of data directory and number with RTC) | 1 | Control | 0x5A01 |
| 0554 | Before numbered screenshot | 1 | Control | 0x5A01-0x5A04 |
| 0555 | After numbered screenshot | 1 | Control | 0x5A01-0x5A04 |
| 0556 | Play Before numbered screenshot | 1 | Control | 0x5A01-0x5A04 |
| 0557 | Play after numbered screenshot | 1 | Control | 0x5A01-0x5A04 |
| 0558 | User management confirms deletion | 1 | Control | 0x5A01 |
| 0559 | Turn on the webcam | 1 | Control | 0x5A01 |
| 055A | Turn off the webcam | 1 | Control | 0x5A01 |
| 055B | Send the webcam IP address | 1 | Control | 0x5A01 |
| 055C | Export all customer information | 1 | Control | 0x5A01 |
| 0562 | Customer gender click select | 1 | Control | 0x5A01: Male 0x5A02:Female |
| 0563 | Beauty screen empty picture display | 1 | Control | 0x5A01 |
| 0564 | Set up or read the network card information | 1 | Control | D1=0x5A D0=The network status 0x00=turn off 0x01=turn on 0xFF The network status (USE WITH E140,E170,E180,E190,E1A0) |
| 0565 | Turn on the specified IP or domain name | 1 | Control | D1=0x5A D0: Switch state 0x00=turn off |

| | | | | |
|------|--|---|---------------|---|
| | camera to the specified location or close the camera | | | 0x01=turn on (use with 0500, E1B0 together) |
| 0566 | Search customer name by first English character or Chinese character | 1 | Control | 0x5A01 |
| 0567 | Select the search name to log in | 1 | Control | D1=0x5A D0:0x01-0x14 (Up to 20) |
| 0568 | Before numbered Screenshot with RTC | 1 | Control | D1:0x5A D0:0x01-0x04 |
| 0569 | After numbered Screenshot with RTC | 1 | Control | D1:0x5A D0:0x01-0x04 |
| 056A | Displays the selected customer information | 1 | Control | D1:D0 0x0001 start 1 increment at a time |
| 056B | Play with RTC Before under screenshots | 1 | Control | 0x5A01 |
| 056C | Play with RTC after under screenshots | 1 | Control | 0x5A01 |
| 056D | Figure management broadcast pictures specified by the client | 1 | Control | D1:0x5A D0:0x01-0xFF (Use together with 6000-67FF) |
| | Red line (for testing) | 1 | Control | 0x5A01 |
| 0571 | Erase the red line (for testing) | 1 | Control | 0x5A01 |
| 3000 | RTC time setting | 1 | Control | D1=0x5A D0=0x01 Set RTC time confirmation |
| 3001 | RTC Year input | 1 | Input display | Data variable input display Year ,for example 2009 |

| | | | | |
|----------------|---|-----------------|---------------|---|
| 3002 | RTC Month input | 1 | Input display | Data variable input display Month (0x01- 0x0C) |
| 3003 | RTC Day input | 1 | Input display | Data variable input display Day (0x01-0x1F) |
| 3004 | RTC Hour input | 1 | Input display | Data variable input display Hour (0x01-0x17) |
| 3005 | RTC Minute input | 1 | Input display | Data variable input display Minute (0x01-0x3B) |
| 3006 | RTC second input | 1 | Input display | Data variable input display Second (0x01-0x3B) |
| 6000-67FF | Displays all images in the customer Before and After directories | 1 | Display | ASCII displays the name of the picture, with 16 words for every 2 display addresses |
| 6800-6FFF | Display the length information of all images in the customer Before and After directories | 1 | Display | ASCII displays the length information corresponding to the picture, and there is a difference of 20 words between every 2 display addresses |
| 7000-7800 | Single letter or Chinese character matching customer name display | 6 | Display | GBK displays the name of each customer that matches, up to 20 |
| 8006-CFFF | Customer profile gender starting address | Two words per 1 | Display | GBK displays the name of each customer that matches, up to 20 |
| 8008-CFFF F | Customer profile telephone starting address | Six words per 1 | Display | GBK displays the gender of the customer profile (from 8006, the difference between every two customers is 0x20) |
| 8010-CFFF | Customer profile birthday starting address | 8 words per 1 | Display | ASCII displays customer profile phone Numbers (starting from 8008, the difference between every two customers is 0x20) |
| D000- D7BF | Display the file information | 32*64 | display | Use with the address 0514's |

| | | | | |
|------------|--|-------|---------|--|
| | | | | <p>command together, Displays N (N is the number of files read) file names starting from a file number, starting from D000 to D7C0, with a maximum of 32 file names displayed simultaneously.</p> <p>For example: D000 shows the first file name D040 displays the second file name. D7C0 displays the 32nd file name</p> |
| D800- D84F | Beauty screen level 2 data directory display | 10*8 | display | Displays the data directory under the person's name |
| D860- D8FF | Beauty screen third level photo display | 10*16 | display | Displays photos in the data directory |
| D900 | The beauty screen displays customer information | 32 | Display | GBK displays customer information (used together with 052C address) |
| D930 | The beauty screen displays client folder results | 8 | Display | ASCII displays the result of client folder: "OK" or "NONE", the result is after 0529 address operation |
| E010 | Name | 16 | Display | <p>When playing pictures, GBK input names, up to 16 Chinese characters, For example: Mr Wang</p> <p>Notice that when playing pictures, we should first operate E010, E030, E050,</p> <p>Then operate 0524 or 0525</p> |
| E030 | Play_picture_data1 | 16 | Display | Display the data 1 folder, such as 2019.03.01, use with address 0524 operation command |
| E050 | Play_picture_data2 | 16 | Display | Display the data 2 folder, such as 2019.05.01, use with the address 0525 operation command |
| E110 | Name | 16 | Display | USB camera screenshot or input name directory information, GBK input name, up to 16 Chinese |

| | | | | |
|------|---------------------------|----|---------------|---|
| | | | | characters |
| E130 | Caputre_picture | 16 | Input display | ASCII input screenshot date, for example 2019.03.01 note:when screenshot, need to operate E110 、 E130、 0528 first, then operate 0523 |
| E140 | Network camera IP address | 10 | Input display | ASCII input display IP string , for example 192.168.1.123 |
| E150 | Customer telephone | 7 | Input display | ASCII input beauty customer phone# |
| E160 | Customer birthday input | 8 | Input display | ASCII input customer's birthday data, For example : 1996.02.03 |
| E170 | Sub net mask | 10 | Input display | ASCII input display sub net mask string, 255.255.255.0 |
| E180 | The gateway | 10 | Input display | ASCII input display gateway string |
| E190 | DNS1 | 10 | Input display | ASCII entry displays the DNS1 string |
| E1A0 | DNS2 | 10 | Input display | ASCII input displays THE DNS2 string |
| E1B0 | RTSP address information | 40 | Input display | ASCII input displays RTSP address information |
| E1E0 | Scale information | 1 | Input display | Data variable input displays the ruler length |
| E1E1 | Before AB operation | 1 | Control | D1=0x5A D0=0x01: To calculate |
| E1E2 | Before AB Length display | 1 | Display | The data variable shows the length of Before AB |
| E1E3 | Before CD control | 1 | Control | D1=0x5A D0=0x01: To calculate |
| E1E4 | Before CD Length display | 1 | Display | The data variable shows the length of Before CD |
| E1E5 | After AB Control | 1 | Control | D1=0x5A D0=0x01: To calculate |
| E1E6 | After AB | 1 | display | The data variable shows the length |

| | | | | |
|------|---|-----------|---------|--|
| | Length display | | | of After AB |
| E1E7 | After CD Control | 1 | Control | D1=0x5A D0=0x01:To calculate |
| E1E8 | After CD Length display | 1 | display | The data variable shows the length of After CD |
| E1E9 | Before actual size calculation | 1 | Control | 0x5A01 |
| E1EA | Before actual size display | 1 | display | The data variable displays the actual size of Before |
| E1EB | After actual size calculation | 1 | Control | 0x5A01 |
| E1EC | After actual size display | 1 | display | The data variable displays the actual size of After |
| E1ED | The starting point of the line starts recording | 1 | Control | 0x5A01 |
| E1EE | The end of the line starts recording | 1 | Control | 0x5A01 |
| E1F0 | When the time with RTC Before screenshot is displayed | 16 | Display | Displays the time display with RTC Before screenshot |
| E200 | When the time with RTC After screenshot is displayed | 16 | Display | Display the time of RTC After screenshot |
| E210 | Display the selected customer's name | 16 | Display | GBK displays the selected customer name |
| E220 | Select picture data and other information to display | 16 | Display | GBK displays the selected picture's data and other information |
| E230 | Display length information of Selected picture | 20 | Display | GBK displays the selected picture's length information |

3、Serial Communication Protocol

1. Serial Port Setting: 115200, 8, N, 1

Baud rate: 115200, could set, needs to be modified the configuration file when as 0

Data bits: 8

Stop bit: 1

Check digit: NULL

2. Communication data frame:

| Address | 0x00 | 0x02 | 0x03 | 0x04 |
|-------------|--------------|--|--------------------|-----------|
| Definition | 0x5AA5 | LEN | CMD | DATA_Pack |
| Description | frame header | The following data length, including command, data | command(0x82/0x83) | data |

3. Interface instruction description

| Command | Data | Description |
|---------|---|---|
| 0x82 | Issued by: The first address of the variable space (0x1000-0xFFFF) + the data to be written Reply: 0 0 x4b x4f | Specifies the address to write data to the variable space. |
| 0x83 | Issued by: Variable space first address (0x1000-0xFFFF) + read data byte length (0x01-0x7D) Reply: Variable space first address + variable data word length + read variable data | Reads the specified length word data from the specified variable space address. |

4. For example:

Set stop playing: The variable address to stop playing is 0x0510, issued command is 5A A5 05 82 0510 5A 02, and the return command is 5A A5 03 82 4F 4B

Read the current playing state: the variable space address of the state variable is 0x0520,

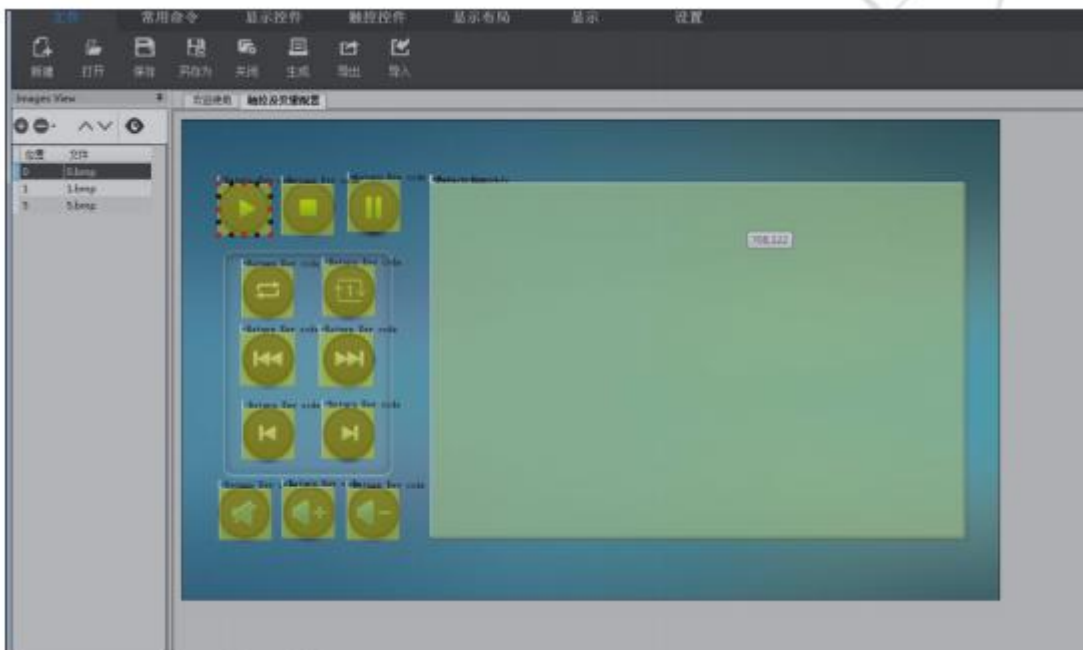
issued command is: 5A A5 04 83 05 20 02, and the return command is: 5A A5 07 83 05 20 00 00 01 01,
Take the last four bytes, where 00: represents the video,
0001 means #1 video is playing (starting from zero), and 01 means normal playback.

4. Use examples for DGUS II

The following example provides a brief explanation of how to develop streaming media screens using DGUS 2.

The default user has some knowledge of the DGUS TOOL development environment.

1. Open the DGUS TOOL, build the project according to the screen resolution, and add the pictures designed in advance.

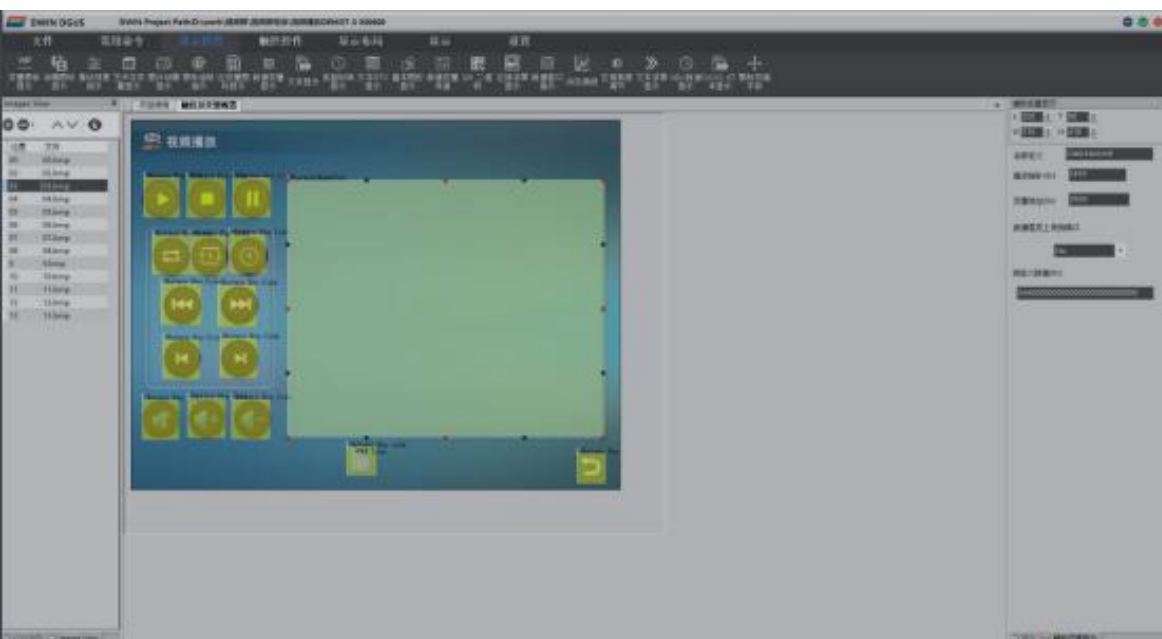


2. On the page of 0.bmp, select [Key Return] in the touch control and select the location to play in the figure. In the property setting, the variable address is: 0510 and the key value is: 5A00. Complete the playback control Settings.



3. On the page of 0.bmp, select [Data variable transfer] in the display control and select the location where the video needs to be displayed. In the property setting, the variable address is: 0500(it can only be this value). Pre-defined data, write 5AA5, complete the setting of the display area, and can set the corresponding display area in any other interface.

Note: The width and height of the control should be multiples of 2.



4. Save the project and generate the configuration file.
5. Control the process of video playback through serial port. The default is to play the first video, as follows:

050D: Turn on video or audio

0500: Set the display range of the playback

0510: To control the video playback, first send 5A00 playback instructions, and then
Send other playback controls

Please follow the above procedure, otherwise it may cause abnormal video and audio playback.

6. Note: When playing videos, the maximum video file format standard is 720P. The video is saved to the SD card root directory. The video sort is the order in which it is copied from other locations to the SD card.

The filename should be no more than 30 Chinese characters if it is all Chinese, and no more than 100 non-Chinese characters if it is all Chinese. In short, the better. The maximum number of video or audio files is 50.

7. SD card upgrade software and boot logo replacement

Streaming media screen support SD card upgrade, T5L and video playback chip support SD card upgrade.

7.1 T5L Upgrade:

- 1) Create DWIN_SET folder in SD card root directory, copy the upgrade files into this folder;
- 2) When the screen is powered off, the SD card is inserted into the Slot T5L SD card. After a period of power on, you can see the upgrade interface and wait for the end of the upgrade;

7.2 Software upgrade of video player chip:

- 1) Create a new UPDATA folder in SD Card root directory and copy the software to be upgraded into this folder
- 2) When the screen is powered off, the SD card will be inserted into the SD card slot of the video player chip. When it is powered on, it will enter the upgrade process. There will be two restarts during the upgrade process without human intervention.

5. Startup logo replacement

1. Create a new DWIN_VIDEO folder in SD card root directory, copy the startup logo image into the folder, save the name of start up logo as 0_logo***, *** could be any character, startup LOGO image format is BMP format, ARGB_8888 attribute.
2. When the screen is powered off, insert the SD card into the SD card slot of the video player chip, and then power on, the screen will be black first, then light up again. After the system is stabilized, the new start up logo can be seen by restarting.

6. Internal FLASH playback audio and video file copy method

1.
 - 1) SD card root directory new DWIN_VIDEO folder, copy audio and video files into the folder, video files named as: 0_VIDEO***, 1_VIDEO***...The audio file name is 0_AUDIO***, 1_AUDIO***...;

2) Screen off electricity, insert the SD card video playback chip card slot, power on, boot interface, such as stability, said audio and video is copy, copy video file first, then copy audio files, adding up to 32 m, the largest copy files from 0 to N file sum is greater than 32 m, only 0 to N - 1 copy files, if greater than 32 m 0 file, do not copy.

7. USB screenshot and play pictures

USB camera screenshot, the captured image is under the name and data of SD Card root directory,

For example, / Wang someone /2019.09.09/

On the contrary, also plays images under the name and data of the SD card root directory.

Appendix I: Modification record

| Data | Modify content | The version number |
|----------------|--|--------------------|
| 2019.1.1 | First release | V1.0 |
| 2019.3.11 | Fixed variable space address definition | V1.1 |
| 2019.5.27 | Fixed variable space address definition | V1.2 |
| 2019.6.17 | Add serial port operation sequence definition | V1.3 |
| 2019.7. 7 | Add internal FLASH play, play notes | V1.4 |
| 2019.7.29 | Add read file instructions, SD card upgrade and boot logo replacement | V1.5 |
| 2019.9.6 | Modified file transfer instructions, added to switch pages automatically play | V1.6 |
| 2019.9.9 | Added usb camera screenshot to SD card and the sd card to play the corresponding picture | V1.7 |
| 2019.10.1 2 | Changed the screenshot and playback address | V1.8 |
| 2020.1.05 | Added beauty screen command address | V1.9 |
| 2020.2.25 | The address of each function of beauty screen is modified and confirmed | V2.0 |
| 2020.3.24 | Added beauty screen to export all customer information and other addresses | V2.1 |