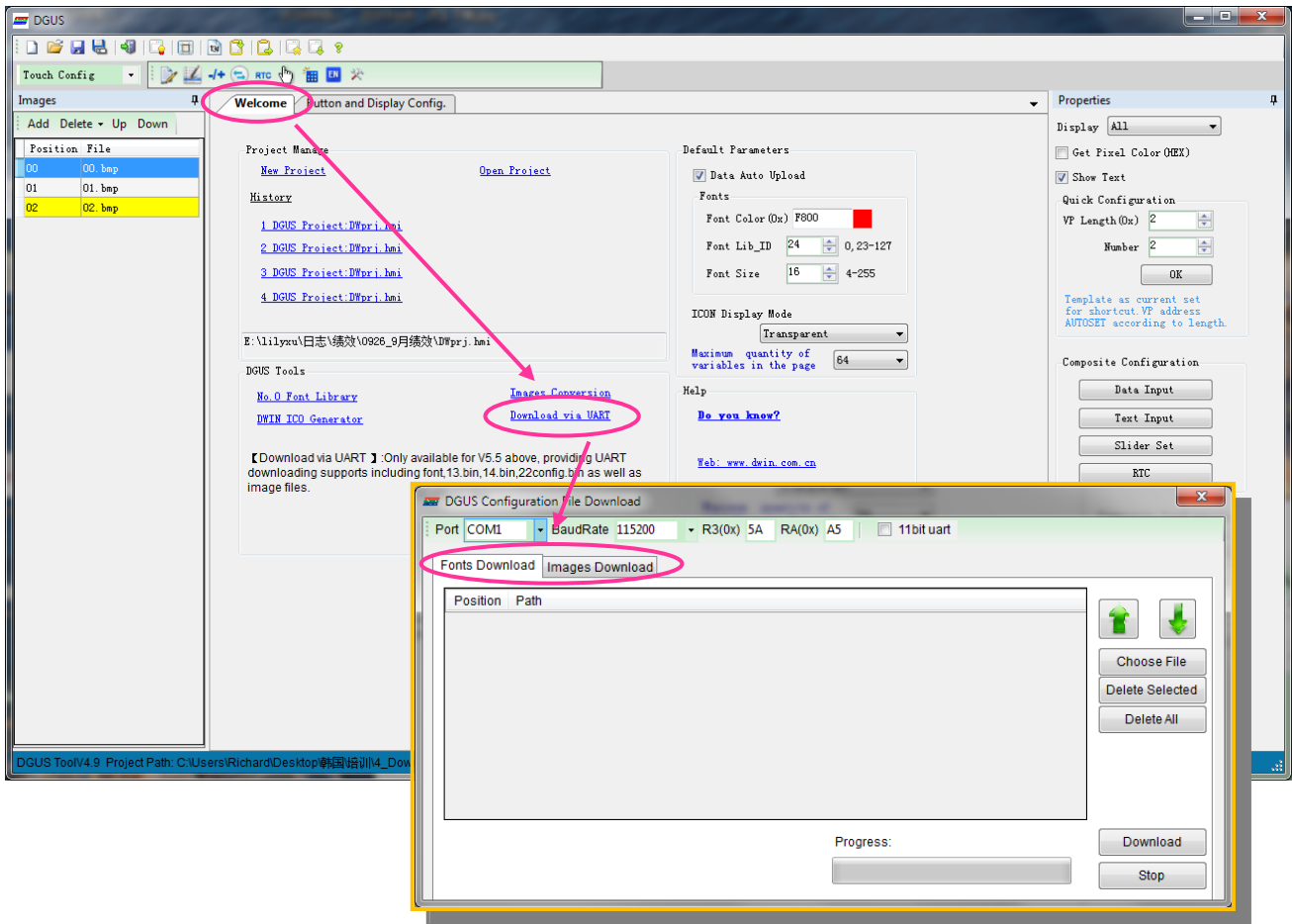
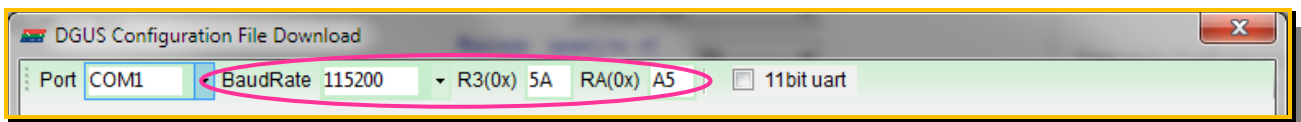


Download via Serial Port



- ① On the home page of DGUS_SDK, click "Download via UART"
- ② Set the below parameters



The three parameters should be the same as the DWIN LCM's.

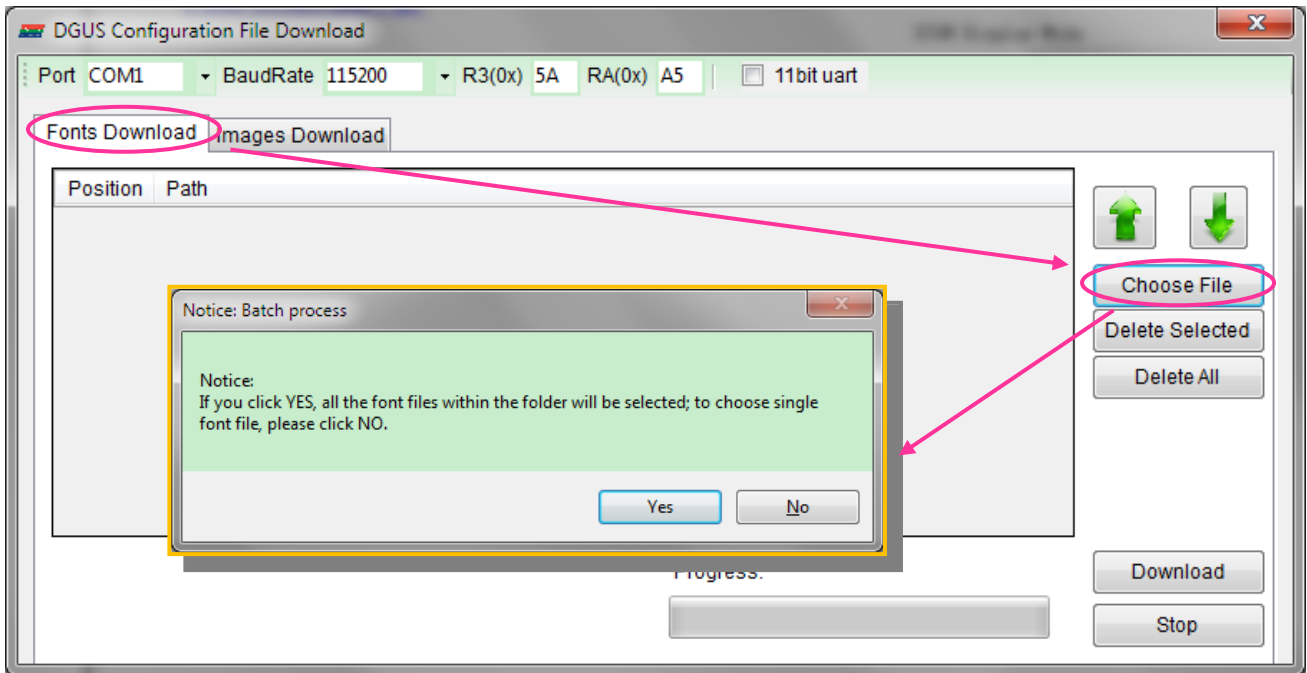
- ③ Download: Fonts and images can be download via serial port



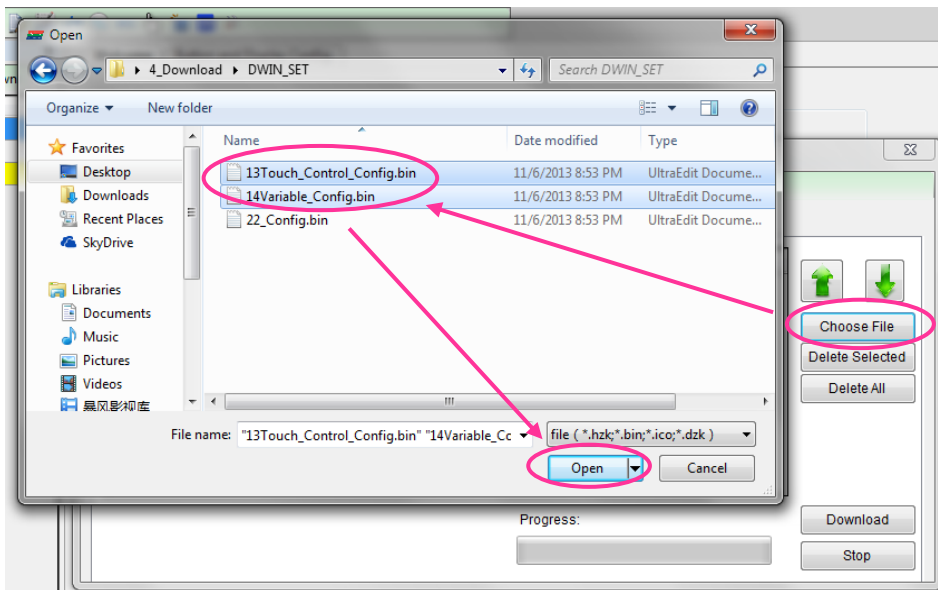
Fonts include:

Font ID	size	Description	Example
0	3072KB	#0 ASCII font.	0_DWIN_ASC.HZK
13	256KB	13 touch configuration file	13_Touch.BIN
14	2048KB	14 variable configuration files (up to 1024 pages with max. 64 variables per page).	14_VAR.BIN
22	256KB	Variable initializing file for the initial value of 56KB access variable.	22_variable initializing.BIN
23	256KB	User program based on DWIN OS.	23_Software.BIN
24-127	26MB	Font, icon library (64-127 space can be use as database).	User defined

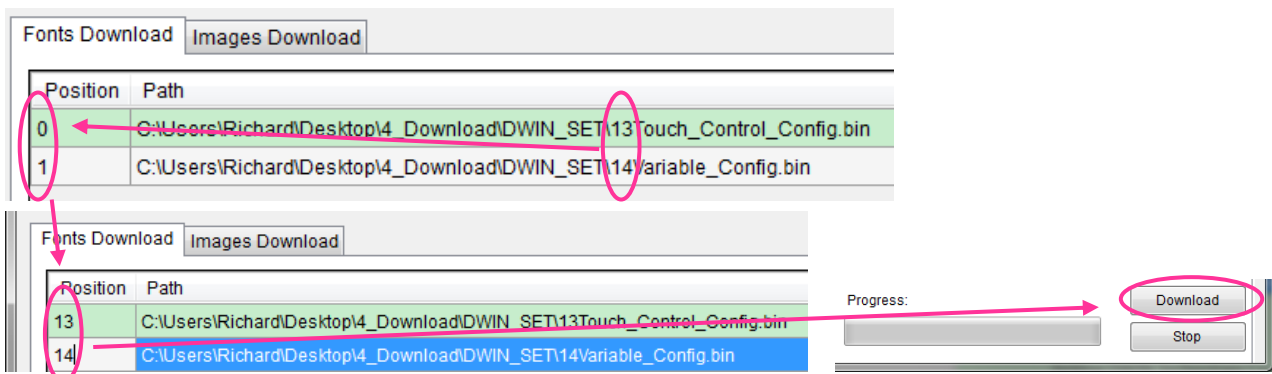
➤ Download Fonts:



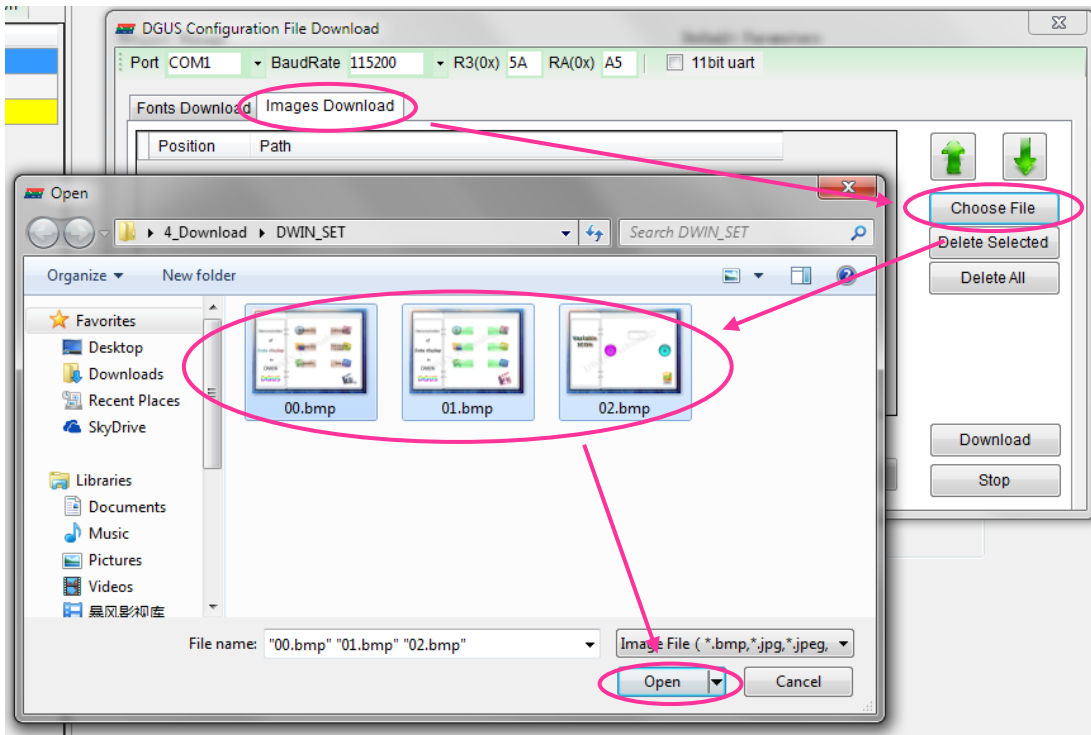
Select the files which you want to download as below. Recommend clicking “No” to select the target files.



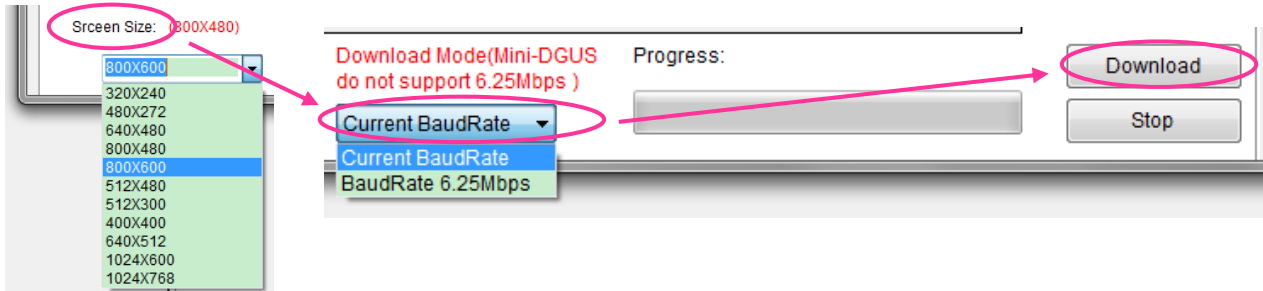
Modify the position of fonts according to the ID of fonts:



➤ Download Images



Set the below parameters:



Resolution: The resolution should be the same as the LCM's.

Baudrate: user can download images in current baudrate. Or select high baudrate 6.25Mbps for fast downloading.