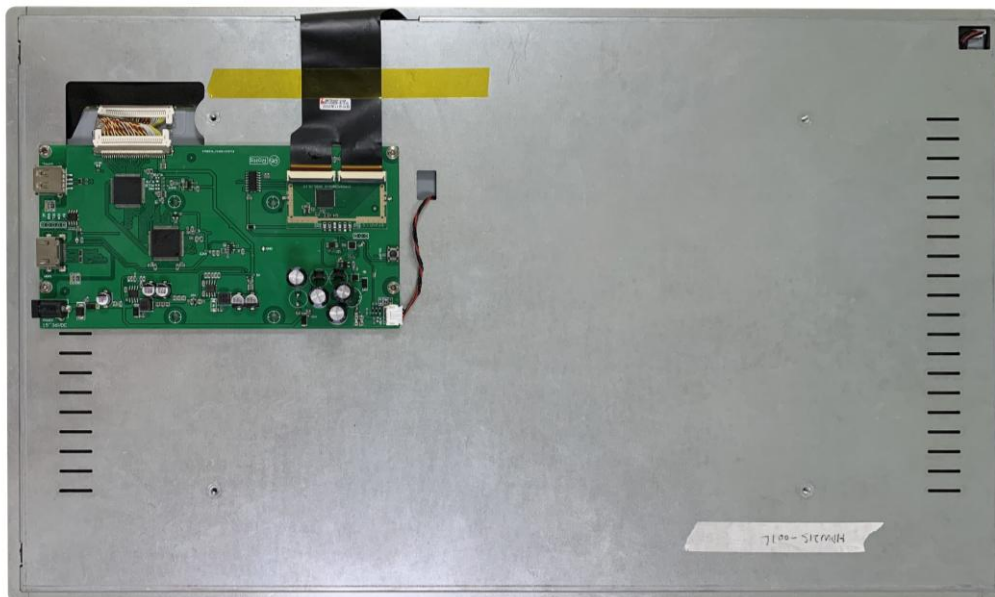


HDW215-001L

**21.5-inch, 1920*1080, 16.7M colors, IPS screen,
CTP, HDMI multimedia display**



1 Display parameters

Properties	Parameters	Description
Color	16.7M(16777216)colors	24 bit color 8R8G8B
LCD type	IPS	IPS process TFT LCM, normal viewing angle
Viewing angle	85/85/85/85 (L/R/U/D)	-
Active Area (A.A.)	476.06 mm(W)× 267.88 mm(H)	1920x1080
Visual area(V.A.)	477.24 mm(W)× 268.71mm(H)	1920x1080
Resolution	1920x1080	Support 0°/90°/180°/270°rotated display
Backlight	LED	≥20000H(Time of the brightness decaying to 50% on the condition of continuous working with the maximum brightness)
Brightness	190nit	-

Note: Long time display of high contrast still image over 30 minutes may lead to display residual shadow, please use screen saver to avoid this problem.

2 Voltage & current

Item	Conditions	Min	Typical	Max	Unit
Power voltage	-	15	24	36	V
Operating Current	VCC = +24V	-	500	-	mA

Recommended power supply: 24V 1A DC

3 Reliability test

Item	Conditions	Min	Typical	Max	Unit
Operating temperature	60%RH at 12V voltage	0	25	50	℃
Storage temperature	-	-20	25	60	℃
Operating humidity	25℃	10%	60%	90%	RH

4 Interface parameters

Properties	Conditions	Min	Typical	Max	Unit
Interface cable	15-36V power interface, HDMI interface				
USB interface	Yes				
SD card slot	None				

5 Peripheral

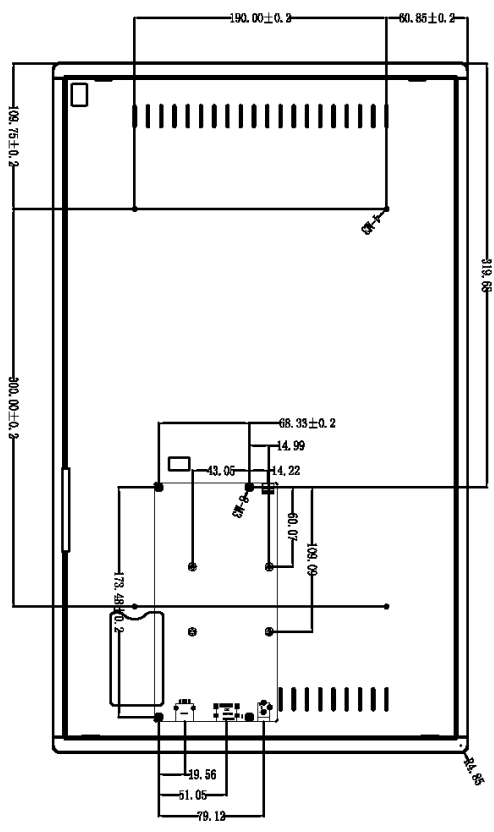
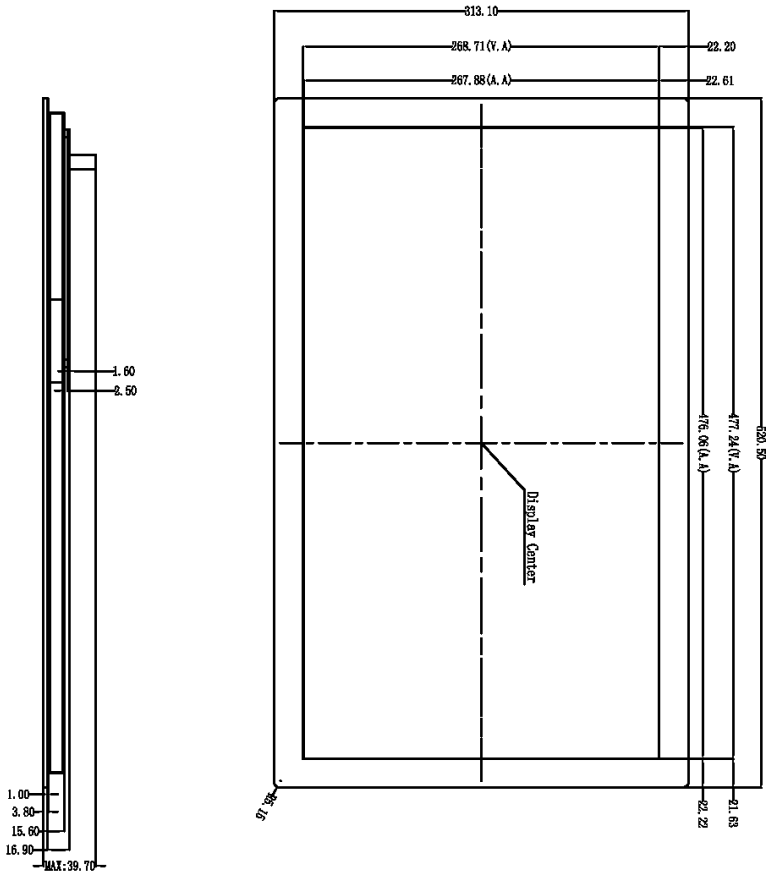
Peripheral	
Peripheral	Capacitive touch panel

6 Packaging & dimensions

Form factor	520.5mm(W)×313.1mm(H)×39.7mm(T)	
Net weight	4200g	
Packaging Standards		
Model	Dimensions	Quantity(Pcs)
Carton5	600mm(L)×450mm(W)×300mm(H)	5

Disclaimer: the data is for reference only and the information of product design that do not affect performance parameters and utilization is subject to alternation without prior notice.

Pin name	Pin description	Pin name	Pin description
Pin1	TMS Detect+	Pin11	TMS Clock Shield
Pin2	TMS Detect Shield	Pin12	TMS Clock-
Pin3	TMS Detect-	Pin13	GND
Pin4	TMS Detect+	Pin14	HCC Data-(Optional, HW1.4+with Ethernet)
Pin5	TMS Detect Shield	Pin15	SQL232 Serial Clock for DDC
Pin6	TMS Detect-	Pin16	SM (I2C) Serial Data Line for DDC
Pin7	TMS Detect+	Pin17	DDC/DEC/HEC Ground
Pin8	TMS Detect Shield	Pin18	+5V Power (aux Board)
Pin9	TMS Detect-	Pin19	Hot Plug Detect (All versions) and HCC Data+ (Optional, HW1.4+with Ethernet)
Pin10	TMS Clock+		



Location hole is used as position reference.
 Unmarked Tolerance is $\pm 0.3\text{mm}$
 Active area is marked in Dash lines

Model	HDW215-001L			DWIN Technologies		
Drawing	A 4	Drawn	G.Y		Date	2021.08.23
Scale	1:1	Review			Date	
Unit	MM	Approval			Date	



7 Revision records

Version	Revise date	Content	Editor
00	2021-08-23	First Edition	ZYJ
01	2021-09-01	Revise brightness description	ZYJ

DWIN Technology